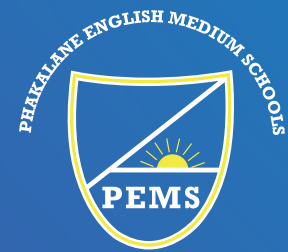




SCHOOL PROSPECTUS

PRIMARY SCHOOL





AIM WHERE EAGLES SOAR

05	WELCOME
06	RESULTS
08	FACILITIES
09	STUDENT LIFE
10	PEOPLE
11	TEAM
12	TEACHING & LEARNING
13	CURRICULUM
15	EXTRA CURRICULUM
16	TRANSPORT
17	ADMISSIONS
18	FUTURE
19	LOCATION

CONTENTS





We know that making decisions for your child or children's education can sometimes feel like a daunting prospect. The impact of making the right choice can be challenging, not only for your child's results, progress and experiences, but more importantly on the life that you want them to live.

Phakalane Primary School will motivate, develop and nurture your child. All this in an environment where inspiration and quality permeates everything, from the foundations of the purpose-built, state-of-the-art buildings to highly skilled and dedicated teachers and staff.

By choosing to send your child to study at Phakalane Primary School, we believe you are making the best choice a parent can make.

Your child's education and future could not be in better hands.





Mr & Mrs Joseph
Co-Founders

WELCOME FROM THE MANAGEMENT

We would like to welcome you all to Phakalane Primary School, a thriving, highly successful learning community, committed to both individual and collective success. We take enormous pride in leading this inspiring school. With our dedicated staff, we are committed to raising the aspirations and achievements of all our students. Our aim is to unlock each students potential by ensuring they receive the best education and opportunities that they deserve.

Our institution is developing a reputation for its relentless pursuit of excellence and its focus on academic rigour. It insists on outstanding behaviour within a harmonious and respectful culture, where students feel happy and safe. We encourage our students to become confident compassionate, independent young adults, with respect for others. There are no limits to the levels of success our students can achieve. "I can achieve anything", is a belief that emanates throughout the primary school. We create a positive attitude through our ethos and values ensuring every child receives access to a top quality education. Phakalane Primary School has a bright future and we are delighted to welcome you and your child to our school.

Mr & Mrs Joseph
Co-Founders





Results

Phakalane Primary School has been developed to be officially recognized as one of the best primary education institutions in the country.

Phakalane Primary School is one of the best performing independent education providers in Botswana, it is also one of the highest performing primary schools nationally at all levels.

Whether you have a university qualification or a career in mind, or are still exploring your options, we'll ensure your results are among the very best. Your education and future couldn't be in better hands when you choose to join Phakalane Primary School.

The School has maintained a 100% pass rate for our Primary School Leaving Examination since 1998. We pride ourselves of the 20 years of exceptional academic excellence



PSLE RESULTS ANALYSIS (as Percentage of Candidates) PER SUBJECT PER YEAR

2013

Overall Grades		Agriculture	English	Maths	Religious & Moral Education	Science	Setswana	Social Studies
A	60%	A 3%	83%	64%	38%	29%	7%	11%
B	31%	B 47%	17%	29%	47%	44%	49%	44%
C	9%	C 40%	0%	6%	14%	25%	39%	41%
D	0%	D 9%	0%	1%	1%	2%	4%	3%
Total	100%	Total 100%	100%	100%	100%	100%	100%	100%

2014

Overall Grades		Agriculture	English	Maths	Religious & Moral Education	Science	Setswana	Social Studies
A	53%	A 0%	89%	39%	40%	19%	19%	11%
B	41%	B 28%	10%	38%	52%	60%	54%	51%
C	6%	C 58%	1%	23%	9%	18%	22%	35%
D	0%	D 14%	0%	1%	0%	2%	4%	3%
Total	100%	Total 100%	100%	100%	100%	100%	100%	100%

2015

Overall Grades		Agriculture	English	Maths	Religious & Moral Education	Science	Setswana	Social Studies
A	69%	A 8%	97%	60%	61%	33%	12%	14%
B	31%	B 50%	3%	35%	32%	47%	57%	63%
C	0%	C 32%	0%	6%	7%	19%	30%	22%
D	0%	D 10%	0%	0%	0%	0%	2%	1%
Total	100%	Total 100%	100%	100%	100%	100%	100%	100%

2016

Overall Grades		Agriculture	English	Maths	Religious & Moral Education	Science	Setswana	Social Studies
A	64%	A 42%	91%	41%	49%	33%	6%	13%
B	33%	B 35%	8%	35%	39%	45%	53%	58%
C	4%	C 21%	1%	22%	12%	21%	28%	28%
D	0%	D 1%	0%	1%	0%	1%	13%	1%
Total	100%	Total 100%	100%	100%	100%	100%	100%	100%

2017

Overall Grades		Agriculture	English	Maths	Religious & Moral Education	Science	Setswana	Social Studies
A	60%	A 19%	81%	25%	42%	25%	3%	10%
B	32%	B 55%	19%	47%	42%	56%	43%	57%
C	8%	C 25%	0%	27%	17%	19%	47%	32%
D	0%	D 1%	0%	1%	0%	0%	7%	0%
Total	100%	Total 100%	100%	100%	100%	100%	100%	100%





Campus & Facilities



At Phakalane Primary School your studies will take place in an inspiring location, with modern, purpose-built buildings and facilities designed specifically for students to enhance their studies.

The quality of teaching and modern, state-of-the-art equipment and industry standard computer laboratories and sporting facilities, will inspire students to make continued progress throughout their studies.





STUDENT LIFE

Students at Phakalane Primary School are a key part of a diverse and thriving student community. Students of different interests, talent or ambitions, become part of a school community that is focused on the future. Students are supported by highly motivated and inspirational teachers. We believe each student is unique and we welcome the individuality each student brings to the school community ,inclusive of fellow students, classmates and the school as a whole.

Learning and leisure are blended successfully on campus to enable you to enjoy your time at school.

Primary school life is exciting, challenging and rewarding, and the school is here to support students every step of the way. It is important to us that you get the most out of your time at Phakalane Primary School and the support you'll receive will ensure you have a positive learning experience.





PEOPLE

Our students, their experience, well-being and needs are at the center of everything we do as a school.

Our ethos and values are central to our culture, organisation and student success. The attention we give to ensuring our students are safe and well cared for is recognised as a strength of the school.

Our experienced and dedicated staff support and encourage all our students of different backgrounds, needs and aspirations. We ensure our students all have the maximum opportunity to achieve and succeed both academically and personally.

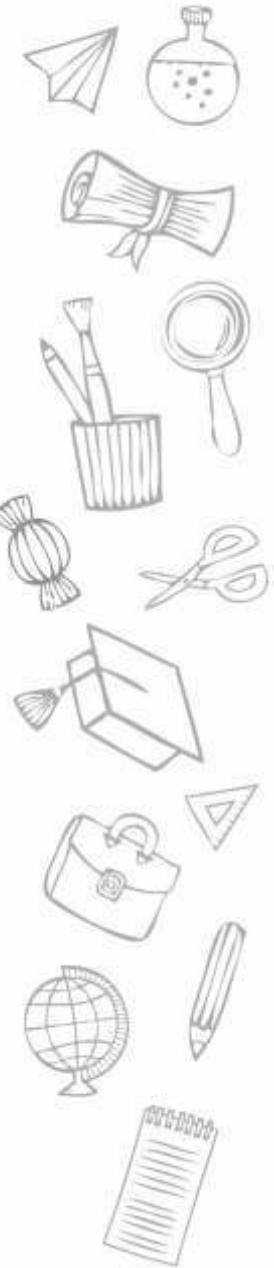
We believe that effective learning is achieved best when school and parents work together. We expect parents and guardians to monitor the use of their children's school calendars, and communication books to encourage them to complete their independent learning tasks to the best of their ability. Our firm belief is that great success can be maintained most effectively when reinforced by the school and home being in partnership. The school hosts a number of parent and students' academic and non-academic activities in which we reinforce the value of cooperation. This includes events such as:

- Meet the teacher
- Parents night
- Spellathon
- Sponsored Walk
- Family fun day
- Prize giving
- Various house sporting activities

MEET THE TEAM

Our highly experienced team is committed to ensuring students receive the highest possible levels of teaching excellence combined with unrivalled student support.





Teaching & Learning

At Phakalane Primary School we demand excellence from our students and our teaching enables them to flourish and achieve beyond their potential. We set aspirational and challenging goals and targets for our students which are reviewed regularly. Students and parents are kept informed of their progress and how they can improve.

All teachers are challenged to be consistently outstanding and learning is rigorously reviewed. Our personalized staff development programme ensures that our staff are at the cutting edge of educational theory and practice. We encourage our students to be aspirational and challenge their own expectations of themselves. We provide them with the knowledge and learning that will allow them to pursue a range of education and career opportunities in the future. Work set for outside of school is designed to prepare students for the learning ahead through a wide range of tasks and activities



CURRICULUM

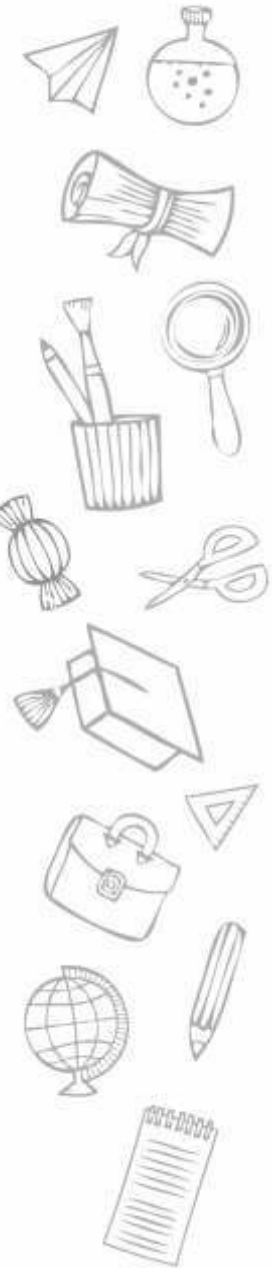
Phakalane Primary School is an exceptional education experience for each and every student. We ensure that the learning needs of students are met through a broad and balanced curriculum. There are currently classes from pre-primary to standard seven. At Phakalane Primary School we have a child-centred approach with an endeavour to build a holistic learner.

Our preparatory programme is one of a kind. Our pre-primary and lower primary students have an intensive and extensive THRASS programme. THRASS is a language programme specially designed to deal with the phonics essentials of comprehensive reading and good literature. The programme further includes handwriting, reading, spelling and the development of literacy. The preparatory programme encompasses numeracy literacy, and fine and gross motor skill development. Our students further develop social and emotional skills, setting them up for the rest of their educational lives.

One of the biggest benefits of the Phakalane Primary School curriculum is that it provides a wide range of subjects and is a solid foundation for secondary education, transitioning our students to cope with the demands of secondary school. The curriculum allows for fostering of intellectual and creativity growth embracing students differences to develop a well rounded global citizen. Our students complete the curriculum ready to compete, conquer and prosper in any global arena.

Our primary school students go on to write the Primary Leaving School Examination (PSLE). PSLE is an external examination from the Botswana Examination Council. The examination is an excellent indicator in assessing how much a primary school pupil has learnt through his/her schooling years.





CURRICULUM

Students access and experience a large range of subjects, all of which are delivered through a skills based curriculum providing them with a firm academic foundation for their studies, as they move up through the school.

We offer a wide and varied range of subjects. Our core subjects of Mathematics, English and Science tend to be taught in sets, while others are taught in a combination of mixed ability sets include the below listed subjects:

- Maths
- Science
- Social/Cultural Studies
- Religious and Moral
- Agriculture
- English
- Setswana
- French
- Information Communications Technology
- Physical Education
- Music
- Art

We continue to expand on the subject offering as we assess the wants and needs of our students, also taking into consideration the ever changing educational environment.

EDUCATIONAL TOURS

There are educational tours which are carried out as scheduled each term of the academic year. Students visit different places of educational interest as seen fit by their teachers in various departments.



EXTRA-CURRICULAR

We aim to provide students with a large number of opportunities to enable them to broaden their experiences outside of the classroom. Whether this is as part of a range of formal sports teams, including football, volleyball and athletics, to more informal clubs in Science, Music, Dance or Drama, where students can come along and try something new. Our annual prize giving and carols by candle light provides many opportunities to get involved, whether front of house, on the stage, or in support helping with lighting or makeup.

We offer a wide range of activities, trips and cultural visits which embrace many aspects of the curriculum.

We also ensure our students experience a wide range of career based activities. Many subjects offer opportunities to grow and develop beyond the confines of formal examinations. Subjects such as Mathematics and Art provide students with additional courses that are tailored towards student's strengths and interests.

Our message is simple, [if you want to try something new we will do all we can to provide the opportunity.](#)





TRANSPORT

The school offers transport for students. Students are collected from their doorstep in the morning and dropped after school. This unique service is designed to help our busy parents and guardian cope with the demands of their busy professional lives without stressing about transporting their children to and from school.



When it comes to the students' safety, one should understand its importance and there is no compromise. The buses and mini-buses are equipped with a state of the art tracking system. This allows for remote monitoring of the fleet including in real time tracking, speed monitoring to allow for safe transit of all students. Alerts from school bus tracking systems are issued to school transport administrators in the event the bus deviates from its assigned route or if speed driving is detected. This also allows for efficiency in the transport system through analysis of best and most time efficient routes.



ADMISSIONS

Moving from pre-primary to primary is an exciting and significant event. We acknowledge this important milestone and invest a significant amount of time and energy in ensuring that the transition is as smooth and problem free as possible. We interact with our feeder pre-primary school on a number of occasions speaking with students and their class teachers, so we know as much as possible about them before they begin with us in January.

Specialist staff from Phakalane Primary School also meet very early in the process, with parents of students with special educational needs, to discuss the provision that will be provided.

A mix of open evenings, and tours during the school day gives students and parents a chance to visit the school and meet teachers and students.

Applications are accepted throughout the year but due to limited space parents are encouraged to make applications as early as possible in the previous year.





THE FUTURE

Our Primary School is a vibrant and hugely successful destination for both pre-primary and primary students. We attract students from both Phakalane Primary School and other local schools who wish to access the large and varied classes we offer.



Artist Impression for the future developments at Phakalane English Medium Schools

At Phakalane English Medium Schools we are dedicated to give our students the best education and the state of the art facilities. We therefore have planned our expansion based on the quality of the services we offer and the quality of the education we provide. " We continue to build and revamp the school to meet the current and future infrastructure needs of our students."

OUR LOCATION



PLOT 21475 MAGANG AVENUE PHAKALANE





CONTACTS

The Principal

Phakalane Primary School

P/Bag Br307 Gaborone, Botswana

Tel: (+267) 390 7010

Fax: (+267) 390 7501

Email: pps@phakalaneprihschool.ac.bw

MESTSIMOTLHABE CAMPUS

P/Bag Br307 Gaborone, Botswana

Tel: (+267) 391 4370

Fax: (+267) 391 4371

Email: preschool@phakalaneprihschool.ac.bw